

**DLF Building No 10**  
DLF Cyber City, Gurgaon

## Arial View – DLF Cyber City



# DLF Cybercity, Gurgaon



## DLF Bldg # 10



- Total Building Area: approx. 2,278,883 sq.ft
- Building Configuration:

Tower	Total Floors	Total Tower Area (sq.ft)
A	3B+G+5F	382,028
B	3B+G+14F	705,027
C	3B+G+20F	1,191,828

## DLF Bldg # 10

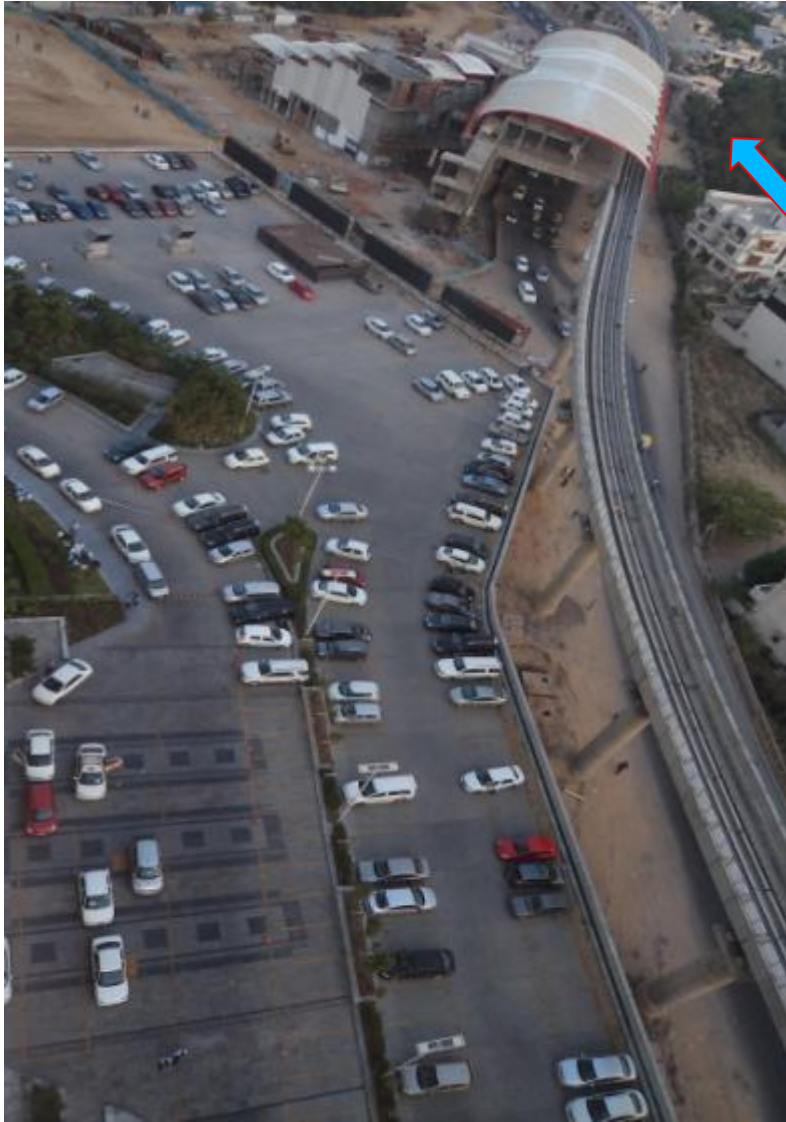


## **DLF Bldg # 10**

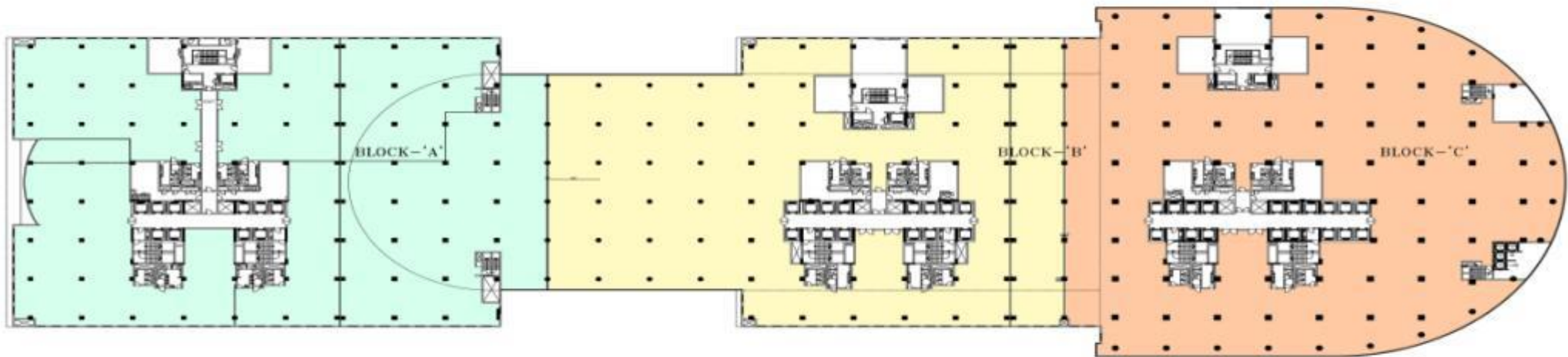


**Tower A, B, C – Front View**

## DLF Bldg # 10



## DLF Bldg # 10 – Typical Floor Plan



TYPICAL FLOOR PLAN

BUILDING 10,  
DLF CYBER CITY, GURGAON.

- Efficient floor plates - Wide column to column spaces
- Typical floor plate size: 40- 65,000 sq.ft. – scalable to 160,000 sft over 3 blocks



# WELCOME TO LIFE OF BUSINESS

DLF Gateway Tower

DLF Gateway Tower

